

# SERIES 200T



# ADJUSTABLE

## SUBMITTED FOR APPROVAL

Truck dock Dor-Seals shall be Adjustable Dor-Seal Series  200T Model \_\_\_\_\_ as manufactured by Chalfant Sewing Fabricators, Inc. 11525 Madison Avenue, Cleveland, Ohio 44102, to fit door opening \_\_\_\_\_" wide by \_\_\_\_\_" high. Base cover fabric shall be \_\_\_\_\_; and color of base fabric to be \_\_\_\_\_. Contact face fabric to be \_\_\_\_\_ contact face to be \_\_\_\_\_. Guide stripe shall be high visibility  yellow  orange  full length  standard length.

### 3-in-1 Guardian Dor-Seal System Options

- Patented anti-theft protection - Added security
- Foam Backing - Conforms to building wall irregularities
- Extra wood substructure - Strong, secure connection for installations

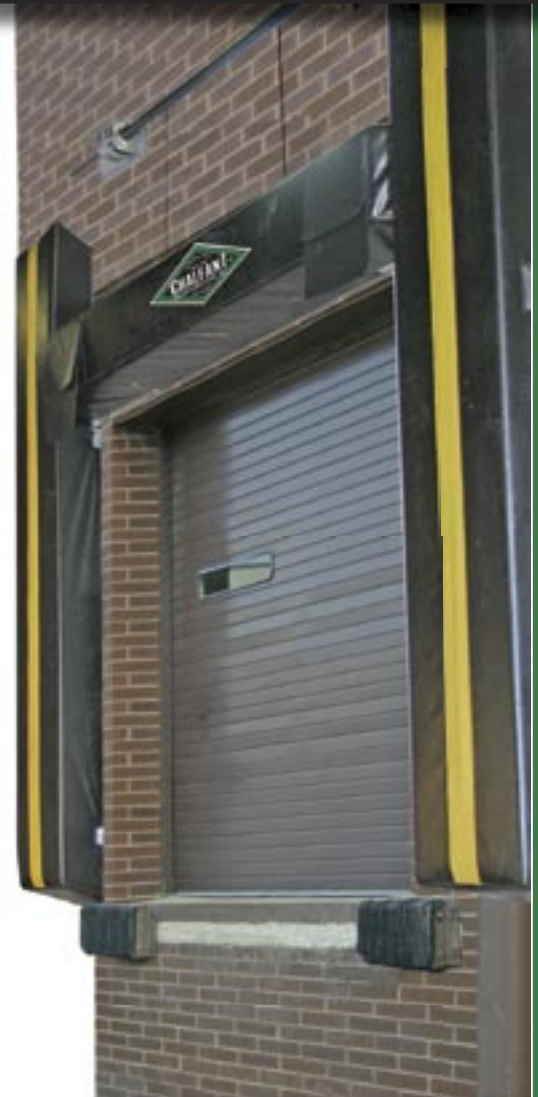
### General Options

- Flame-retardant fabric  Door numbers on unit (specify in notes)
- Inside wear face (vertical side pad inside chafe reinforcement)  4'  8'
- Bottom Draft Flaps  3"  6"  Inside  Front  All
- Metal Hoods  10'  12'  14" Proj  18" Proj  24" Proj  36" Proj

### Standard Construction Features Summary

- Beveled side pads to provide tight seal against truck and prevent weather, dust, bugs, exhaust fumes from entering building.
- High resilient premium grade polyurthane foam, bonded with high quality liquid adhesive to kiln dried wood, all are encased inside the dock seal fabric cover to protect it from abuse and the elements (optional 14 gauge galvanized steel backing also available).
- Adjustable head pad accomodates wide range of trucks of varying heights
- 18" Metal back head pad is counterbalance by torsion spring & travels in tracks.
- All pads are equipped with air vents to help minimize rupture, and drain holes equipped with brass grommet type drain holes to reduce moisture build-up.
- Wide variety of tested high quality fabrics available (see chart below)
- One (1) year Guarantee against manufacturing defects in material & workmanship from date of installation. \*Excludes any failure caused by improper application, improper installation, damage caused by damaged trucks or trailers, overloading, abuse or negligence, are not covered by warranty.

Chalfant has pioneered, developed and provided the industry with quality loading dock equipment since 1940. Safe, affordable, reliable dock equipment for your application needs.



\*SHOWN WITH OPTIONAL FULL LENGTH GUIDE STRIPE

Consistent with our policy of continuing product improvement, we reserve the right to change these specifications without notice or obligation.

### Select Base Face Fabric And Unit Color:

- |                                      |                                      |  |  |   |   |  |
|--------------------------------------|--------------------------------------|--|--|---|---|--|
| <input type="checkbox"/> 22 oz Vinyl | <input type="checkbox"/> 40 oz Vinyl | <input type="checkbox"/> 16 oz Hypalon | <input type="checkbox"/> 40 oz Hypalon | <input type="checkbox"/> 16 oz Neoprene | <input type="checkbox"/> 40 oz Neoprene | <input type="checkbox"/> High-Tear Resistant Guardian 60 |
| <input type="checkbox"/> Black       | <input type="checkbox"/> Black       | <input type="checkbox"/> Black         | <input type="checkbox"/> Black         | <input type="checkbox"/> Black          | <input type="checkbox"/> Black          | <input type="checkbox"/> Black                           |
| <input type="checkbox"/> Blue        | <input type="checkbox"/> Blue        | <input type="checkbox"/> Blue          | <input type="checkbox"/> Tan           |   |   |  |
| <input type="checkbox"/> Tan         | <input type="checkbox"/> Tan         | <input type="checkbox"/> Green         | <input type="checkbox"/> Brown         |   |   |  |
| <input type="checkbox"/> Green       | <input type="checkbox"/> Brown       | <input type="checkbox"/> Brown         |  |   |   |  |
| <input type="checkbox"/> Brown       |                                      |  |  |   |   |  |

Note: See Main Catalog For Actual Colors. Samples Of Materterials Are Available Upon Request Consult Factory For Other Available Colors.

### Select Contact Face:

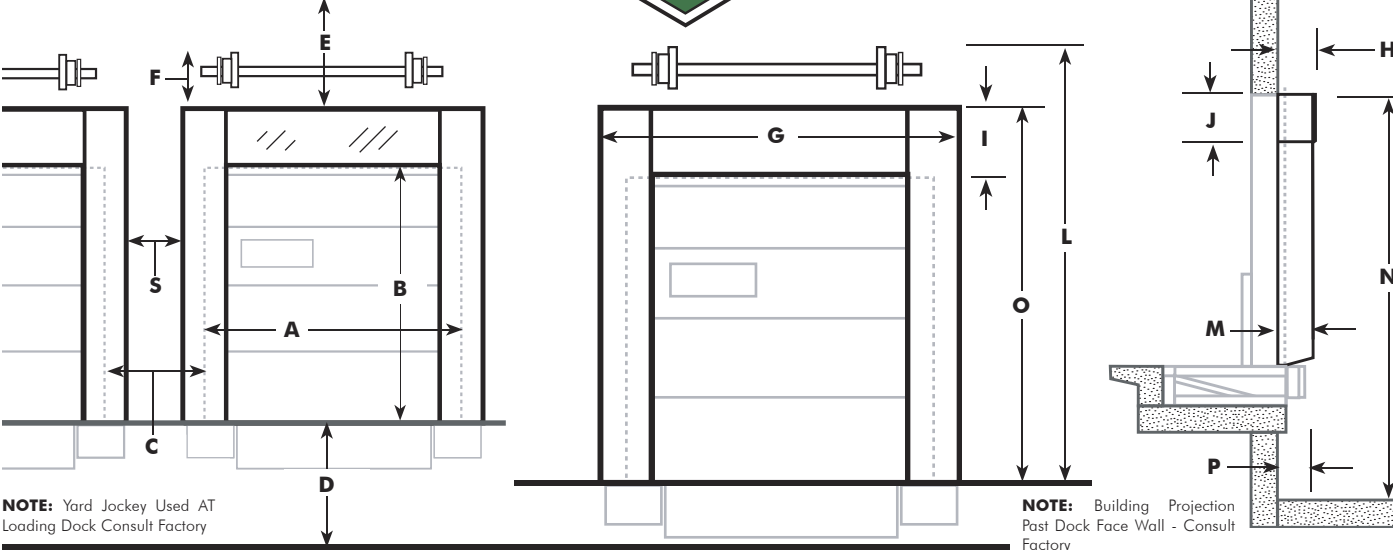
- Wear Face
- Guardian Face
- Guardian Pleat GP4
- Guardian Pleat GP8
- Guardian Pleat GP16



### Select Contact Fabric:

- 22 oz Vinyl
- 40 oz Vinyl
- 16 oz Hypalon
- 40 oz Hypalon
- 16 oz Neoprene
- 40 oz Neoprene
- High-Tear Resistant Guardian 60

# SERIES 200T ADJUSTABLE



**General Information**

Model \_\_\_\_\_ Color \_\_\_\_\_  
 Door Size: Width-**A** \_\_\_\_\_ Height-**B** \_\_\_\_\_  
 Number Of Units \_\_\_\_\_ Base Fabric \_\_\_\_\_  
 Contact Material \_\_\_\_\_ Contact Face Type \_\_\_\_\_  
 Inside Wear Face \_\_\_\_\_  Flame-Retardant Fabric  
 3 - 1:  Anti-Theft Protection  Foam Backing  Extra Substructure  
 Double Counter Balance Control  
 Guide Stripe:  Yellow  Orange  Full Length  Standard Length  
 Dock Height-**D** \_\_\_\_\_ Dock Bumper Projection \_\_\_\_\_  
 Plus Wall Set Back \_\_\_\_\_ Total-**P** \_\_\_\_\_  
 Approach:  % of Incline \_\_\_\_\_ Bumper Projection \_\_\_\_\_  
 % of Decline \_\_\_\_\_ Bumper Projection \_\_\_\_\_  
 Level Drive Approach \_\_\_\_\_ Bumper Projection \_\_\_\_\_  
 Distance Between Doors-**C** \_\_\_\_\_  
 Clearance Above Doors-**E** \_\_\_\_\_  
 Required Head Room Above Side Pads-**F** \_\_\_\_\_

**Standard Seal Information**

Side Pad Length-**O** \_\_\_\_\_ Side Pad Dimensions: Face \_\_\_\_\_ Back \_\_\_\_\_  
 Pad Height: Front-**I** \_\_\_\_\_ Back-**J** \_\_\_\_\_ Width Front- \_\_\_\_\_ Width Back- \_\_\_\_\_  
 Bottom Projection of Unit-**M** \_\_\_\_\_ Top Projection of Unit-**H** \_\_\_\_\_  
 Bottom Draft Flaps:  3"  6"  Inside  Front  All  
 Mounting - Total Offset (Add Both Sides Together) = \_\_\_\_\_  
 Front of Seal Opening: Width \_\_\_\_\_ Height \_\_\_\_\_  
 Overall Outside Unit Dimensions Width-**G** \_\_\_\_\_ Height-**L** \_\_\_\_\_  
 Total Height of Unit From Driveway-**N** \_\_\_\_\_

**Drop Curtain Height-K**

Velcro \_\_\_\_\_  Adjustable Drop Curtain With Pull Ropes  
 Foam Front Specify \_\_\_\_\_  Weighted  Door Numbers \_\_\_\_\_

**Truck Service Range**

Min. Height \_\_\_\_\_ Max. Height \_\_\_\_\_  
 Min. Width \_\_\_\_\_ Max. Width \_\_\_\_\_

**SPECIFY DOCK SEAL PAD TYPE & MOUNTING**

Type A - Beveled Pad Flush Mount       Type B - Non-Beveled, Off-Set Mount       Type C - Non-Beveled Pad, Flush Mount

**SIDE PAD DIMENSIONS** - Width of Face \_\_\_\_\_ Width of Back \_\_\_\_\_

MODEL: \_\_\_\_\_ QUANTITY: \_\_\_\_\_  
 CUSTOMER: \_\_\_\_\_  
 SIGNATURE APPROVED BY: \_\_\_\_\_  
 PROJECT: \_\_\_\_\_  
 ADDRESS: \_\_\_\_\_  
 CITY: \_\_\_\_\_ STATE: \_\_\_\_\_  
 ARCHITECT: \_\_\_\_\_  
 GENERAL CONTRACTOR: \_\_\_\_\_

11525 MADISON AVENUE  
 CLEVELAND, OH 44102-2325  
 TEL: 216-521-7922 FAX: 216-521-6854  
 VISIT US ON THE WEB: [www.ChalfantUSA.com](http://www.ChalfantUSA.com)