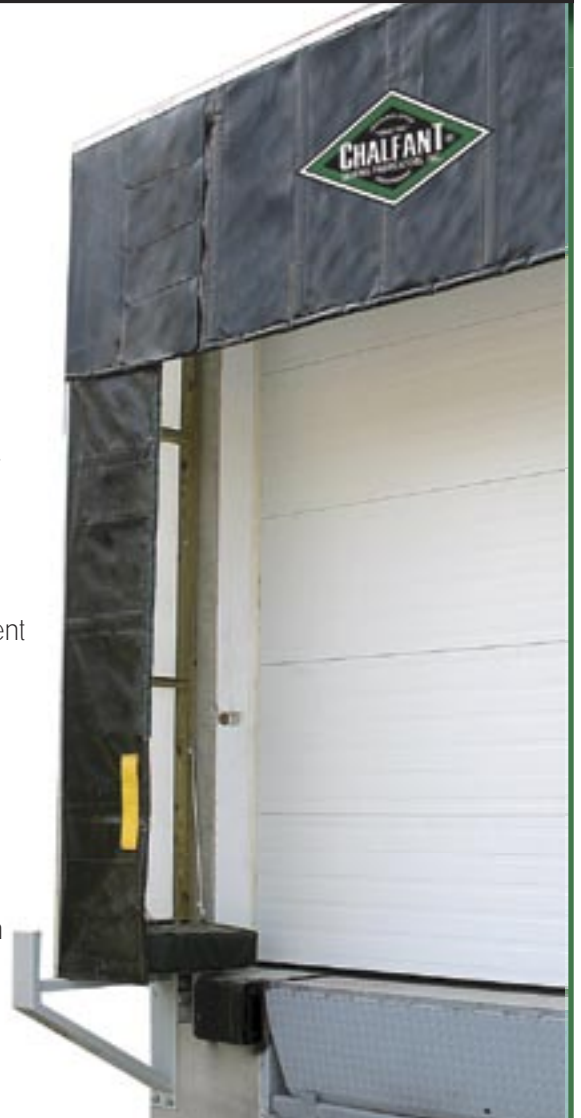




SUBMITTED FOR APPROVAL

Truck dock shelter shall be model Series 700 Rigid as manufactured by Chalfant Sewing Fabricators, Inc. 11525 Madison Ave., Cleveland, Ohio 44102, to fit door opening _____" wide by _____" high. Base cover fabric shall be _____; and color of base fabric to be _____. Guide stripe shall be made of high visibility yellow orange full length standard length and shelter is to be equipped with standard 5" draft pads.



Standard Construction Features Summary

- Rigid Shelter designed to provide tight seal against truck and prevent weather, dust, bugs, and exhaust fumes from entering building.
- Heavy-duty wood frame top and sides covered with translucent polyurethane covering which will allow natural light into the dock area or with optional steel square tube frames
- Raked header to allow for drainage
- Draft pads located at bottom of side member prevent air infiltration
- Wide variety of tested high quality fabrics available in a large array of colors
- One (1) Year Guarantee against manufacturing defects in material & workmanship from date of installation. *Any failure caused by improper application, improper installation, damage caused by faulty trucks or trailers, overloading, abuse, or negligence are not covered by this warranty.

General Options

- Door numbers on unit(s); Specify in notes
- Raked roof (Standard)
- Flat roof
- No roof
- Bumpers included (Standard)
- No bumpers
- Treated wood frame (Standard)
- Steel frame

Chalfant has pioneered, developed and provided the industry with quality loading dock equipment since 1940. Safe, affordable, and reliable dock equipment for your application's needs. Consistent with our policy of continuing product improvement, we reserve the right to change these specifications without notice or obligation.

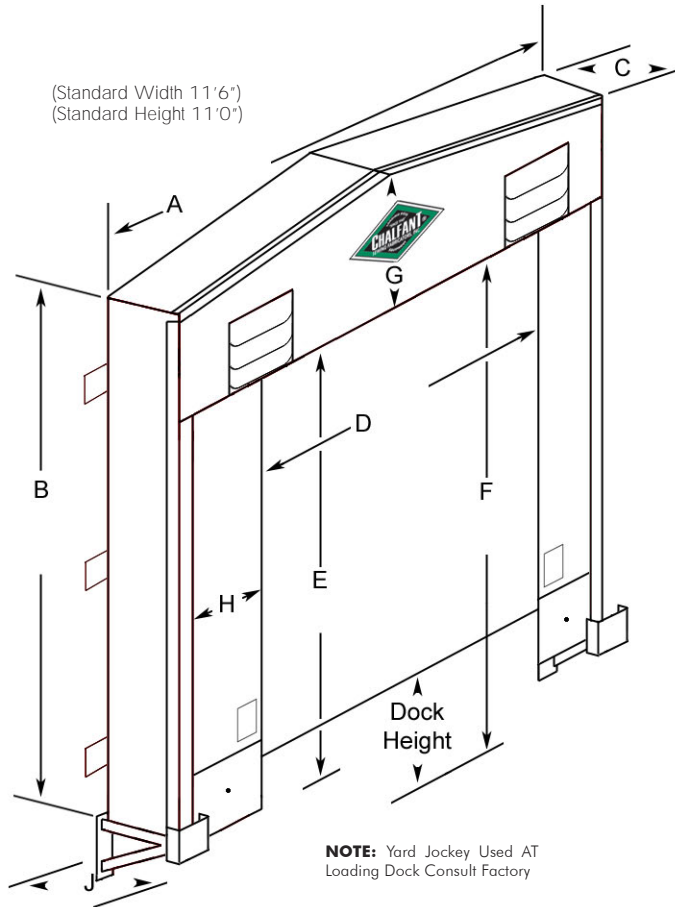
STOCK MODELS (Normally ship within 2-3 business days)

- Model 715V for door opening 8'0" x 8'0" up to 10'0"x10'0", 24" projection
- Model 715V for door opening 8'0" x 8'0" up to 10'0"x10'0", 30" projection

SERIES 700



RIGID SHELTER



NOTE: Yard Jockey Used AT Loading Dock Consult Factory

General Information

Model: _____
 Color: _____
 Door Width (A): _____
 Door Height (B): _____
 Number of Units: _____
 Base Fabric: _____
 Guide Stripes: Standard Length (18") Full Length
 Dock Height: _____
 Dock Bumper Projection: _____
 Plus Wall Set Back: _____
 Total: _____
 Approach: % of Incline _____ Bumper Projection _____
 % of Decline _____ Bumper Projection _____
 Level Drive Approach Bumper Projection _____

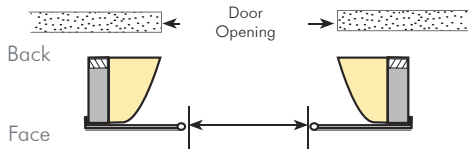
Distance Between Doors: _____
 Distance Between Units: _____
 Clearance Above Doors: _____
 Clearance Above Units: _____

Standard Shelter Information

Head Curtain Height (G): _____
 Side Curtain Face (H): _____
 Unit Projection: Top (C) _____ Bottom (J) _____
 Bottom Draft Pads: 5" Standard
 Front of Seal Opening: Width (D) _____ Height (E) _____
 Overall Outer Dimensions: Width (A) _____ Height (B) _____

SPECIFY MOUNTING

Type B: Rigid Shelter, Off-Set Mount



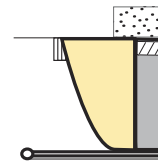
CURTAIN - Width of Curtain _____

NORMAL CLEARANCES

Door Width Clearance Ea. Side Overall Unit Width

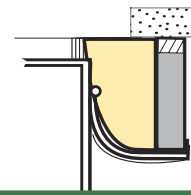
OPEN DOCK POSITION

700 Series Shelter Side



TRUCK IN POSITION

700 Series Curtain In Compression



MODEL: _____ QUANTITY: _____
 CUSTOMER: _____
 SIGNATURE APPROVED BY: _____
 PROJECT: _____ ORDER #: _____
 ADDRESS: _____
 CITY: _____ STATE: _____
 ARCHITECT: _____
 GENERAL CONTRACTOR: _____



"Quality Made, Built To Last"

11525 MADISON AVENUE
 CLEVELAND, OH 44102-2325
 TEL: 216-521-7922 FAX: 216-521-6854
 VISIT US ON THE WEB: www.ChalfantUSA.com